



COFFRAL Philippines

Company Presentation

COFFRAL

01 Company Profile

page 5

02 Our Expertise

page 10

03 Our Certificates

page 44

04 Our Contact Information

page 47



Overview



The Coffral City: "Our product line visually explained"

ACCESS

- 1a JLG Ultra Boom Lift
JLG ลิฟต์บูมยาวพิเศษ
- 1b JLG Articulating Boom Lift
JLG ลิฟต์บูมพับได้
- 1c JLG Scissor Lift
JLG ลิฟต์กรรเชียง
- 1d JLG Telehandler
JLG รถยกแบบผสม
- 2a Industrial Ringlock Scaffold System
ระบบโครงเหล็กวงแหวนล็อคสำหรับงานอาคาร
- 2b Industrial Ringlock Circular Scaffold System
ระบบโครงเหล็กวงแหวนล็อคสำหรับงานอาคาร
- 2c Industrial Ringlock Hanging Scaffold System
ระบบโครงเหล็กวงแหวนล็อคสำหรับงานอาคาร
- 3a Gondola (Standard)
กระเช้าไฟฟ้า (มาตรฐาน)
- 3b Square Gondola (With 90° Corner Sections)
กระเช้าไฟฟ้าแบบสี่เหลี่ยม (มีข้อต่อมุม 90 องศา)



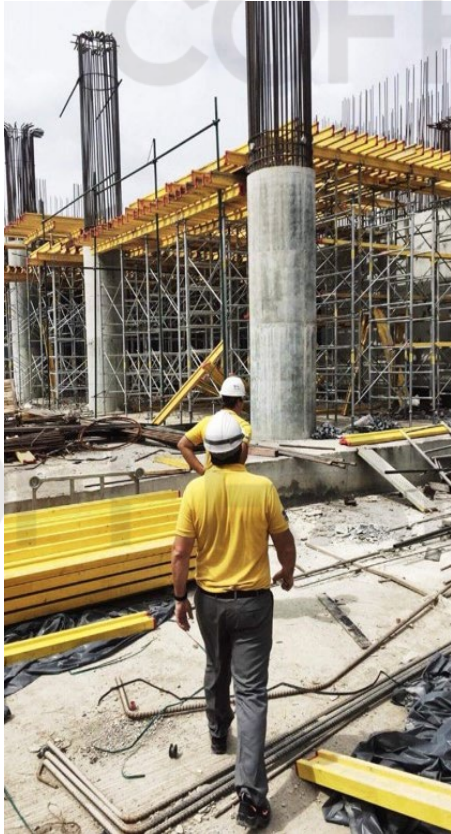
SHORING

- 4a Staflex Concrete Slab Shoring System
ระบบโครงเหล็กสำหรับรองรับคอนกรีต
- 4b Staflex Table Formworks
ตารางไม้สำหรับรองรับคอนกรีต
- 5 Telescopic Shoring Jack (PROP)
อุปกรณ์สำหรับรองรับคอนกรีต
- 6 Modular Ringlock Heavy Duty Shoring System
ระบบโครงเหล็กวงแหวนล็อคแบบหนัก
- 7 Trench Shoring System
ระบบโครงเหล็กสำหรับรองรับดิน

VERTICAL FORMWORKS

- 8a Universal Framax Column Formwork
แบบหล่อเสาเข็ม
- 8b Framax Wall Formwork (Double Sided)
แบบหล่อผนังแบบสองด้าน
- 8c Framax Retaining Formwork (Single Sided)
แบบหล่อผนังแบบด้านเดียว

Our Business



**Rental of
Construction
Equipment**



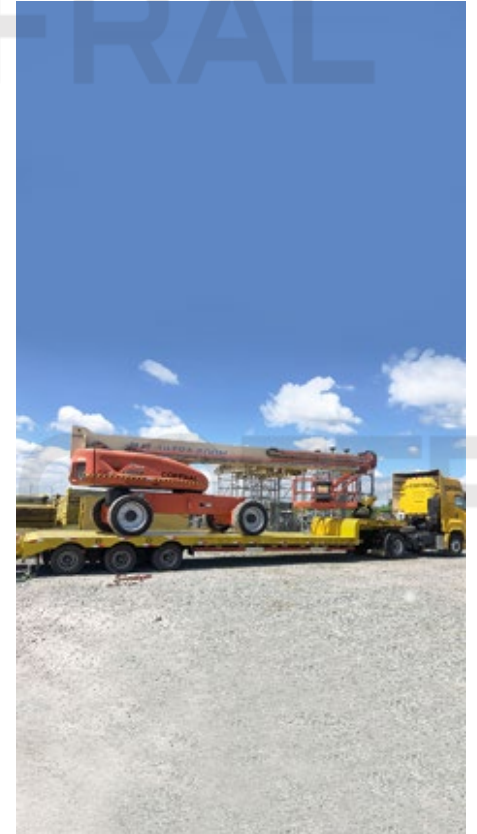
**Sales of
Construction
Equipment**



Engineering



Manpower

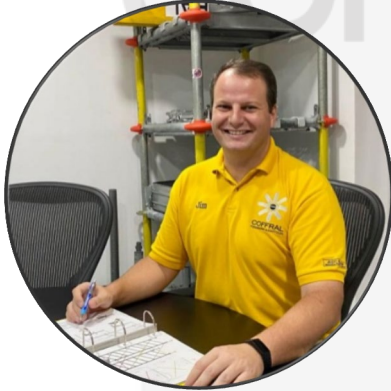


Transportation

01

Company Profile

Message



As I look at the growth over the year since our inception in 2010, I am extremely proud of what we have achieved, and even more excited about our outlook for an equally promising future. We have successfully garnered business from across Southeast Asia, while earning our client's trust along the way. Thanks to our experience, commitment to quality and community, and integrity.

What makes us different?

We make any small contractor instantly big in the market! The difference in between a big contractor and a small one is the availability of equipment. This gap will be completed by Coffral. You only have to bring your know-how and skills to the table!

Our talented team. Among our most important assets is the extensive knowledge base, deep-rooted passionate, and unwavering commitment of our highly-qualified, diverse staff. The Coffral Team is committed to delivering the highest quality products and providing unparalleled services to our costumers.

We act with dedication and honest perspective. We listen and hear to understand! We establish in-depth relationships with our clients by learning their environments, challenges and goals firsthand, so that we can offer tangible & profitable solutions.

Sincerely,

Jim Goudsmit
CEO of Coffral Asia Pacific

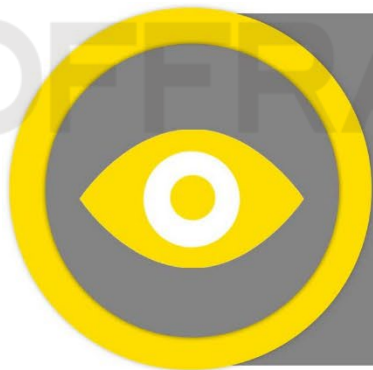
Pioneer & Forward Thinking



COFFRAL, is inspired of the French word “Coffrage”, meaning “Formworks”. The COFFRAL Asia Pacific Group all began in the 1970s with its founding father, Jules Goudsmit, who invented the Staflex / H-Frame shoring system and was the first to implement it in Asia. The company, which is tracing its roots to decades of European tradition and expertise, was later established in the Philippines in January 2010 and is now owned by Jim Goudsmit, the son of the founder.

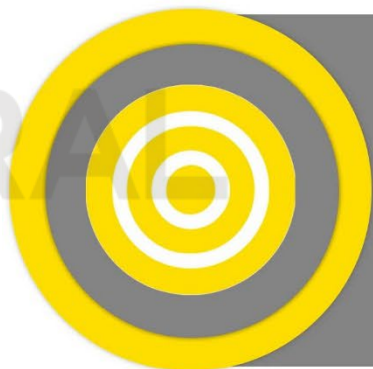
COFFRAL is a family run business, who believes in providing high quality and innovative construction equipment with exceptional services. Small enough to treat customers as individuals, but with the expertise and equipment fleet of a large company.

1970s	2010	2012	2013	2016	2018	2020	2021	2022
Introduction of Staflex/ H-Frame in Asia by Coffral founding father.	Coffral was established in the Philippines and introduced a new product in the market: Industrial Ringlock Scaffold System.	Coffral introduced a new product in the Philippines: Trench Boxes.	Coffral introduced a new product in the Philippines: Atlas Heavy Duty Shoring. The Company become ISO Certified.	Introduced a new product in the Philippines: Gondola.	Coffral opened a Rental park in Concepcion, Tarlac.	Coffral introduced a new product in the Philippines: Aerial Platforms.	Coffral logistic started with Transportation of Aerial Platforms.	Coffral takes as first the responsibility for the maintenance of JLG Aerial Platforms: Doctor JLG.



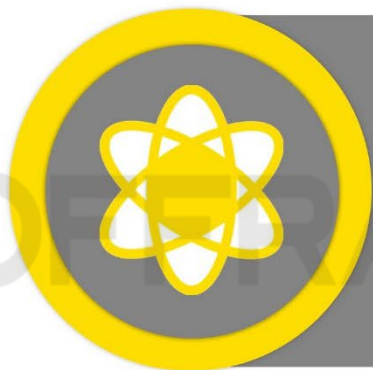
VISION

TO BE A LEADING RENTAL PROVIDER OF SAFE, HIGH PERFORMANCE CONSTRUCTION SYSTEMS FOR CONTRACTORS.



MISSION

WE ARE COMMITTED TO:
EXCELLENCE IN PRODUCTS WITHOUT COMPROMISE FOR SAFETY OF WORKERS AND COMMUNITIES.
BE BEST AND THE MOST RELIABLE.
PROVIDING SOLUTIONS TO OUR PARTNERS.
DELIVERING PHENOMENAL CUSTOMER SERVICE.
TRAINING OUR CUSTOMERS VIA OUR POOL OF INSTRUCTORS AND TEACHERS.



VALUES

LEARNING AND GIVING CHANCES- EVERYBODY CAN BE TRAINED.
PROGRESS- WE DARE TO MAKE NEW MISTAKES.
HAPPINESS- WE WORK HAPPILY IN A SINCERE WORKING SPACE.
SISTERHOOD AND BROTHERHOOD- EVERYBODY HELPS EACH OTHER AND CELEBRATE TOGETHER OUR SUCCESS.
HARD WORK & DEDICATION ARE INCENTIVIZED!

Our Products & Services



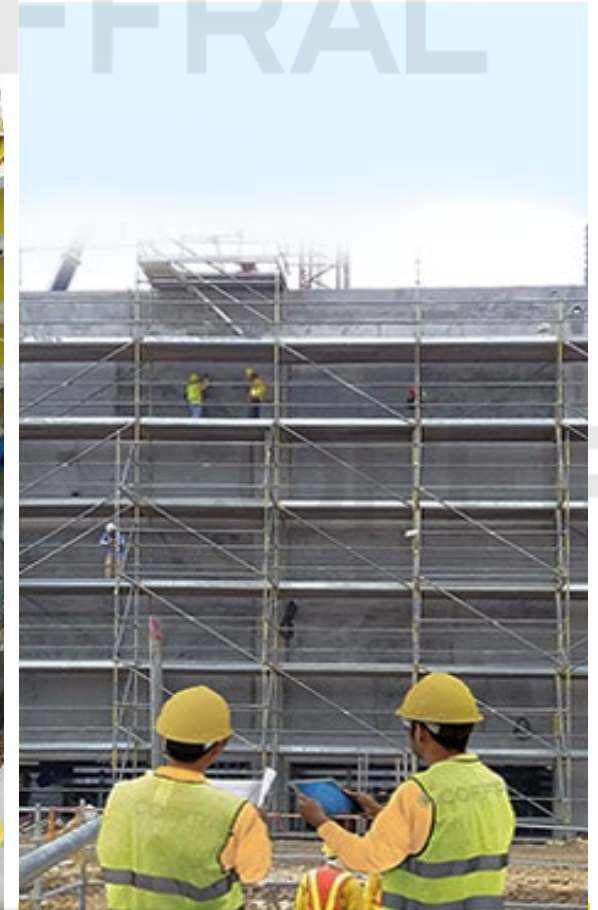
Access



Shoring



Vertical Formworks



Services

02

Our Expertise

Access Solutions



Aerial Platforms



**Industrial Ringlock
Scaffold System**



Gondola

AERIAL PLATFORMS



Aerial Platforms Equipment

PEOPLE LIFTING / MANLIFTS

LIFTING EQUIPMENT



Boom Lifts

- Can reach from 15.50m to a maximum height of 43.50m.
- Ideal for hard to reach places.
- Perfect for maximum horizontal and vertical reach.
- Diesel driven → only outside use.
- All-terrain tires.



Scissor Lifts

- Can vertically reach up to 15m high.
- Ideal for indoor maintenance and when platform extension is required,
- Electrically driven → can be used inside & outside.
- Can only be used on flat concrete flooring.



Spider Lifts

- Can reach up to 20m high.
- Lightweight, as compact as possible and track-mounted booms.
- Can fit through small gates.
- Electrically driven → can be used inside & outside.



Vertical Mast Lifts

- Can reach up to 7.50m high.
- Ideal for low-level access, inside offices and malls.
- Electrically driven → can be used inside & outside.
- Can only be used on flat concrete flooring.



Telehandler

- Lifting capacity of 4 tons at 13m height.
- Goes behind the typical forklift reach thanks to its telescopic capacity.
- Also called telescopic forklift.
- Diesel driven → only outside use.
- All-terrain tires.

Aerial Platforms Projects Highlights



2021-2022
Parklinks Bridge Project

www.COFFRAL.ph



2021
Clark Int'l Airport New Terminal Building – Cleaning Project

www.COFFRAL.ph

Aerial Platforms Projects Highlights



2021

Clark Int'l Airport – Aircraft Maintenance, Repair and Overhaul (MRO) Project.

www.COFFRAL.ph



2021

St. Luke's Medical Center - Maintenance Project.

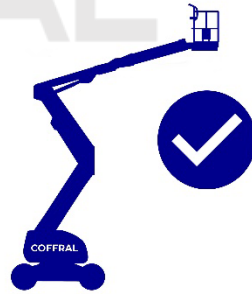
www.COFFRAL.ph

Services for Aerial Platforms



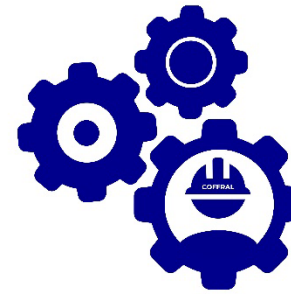
Safety

All machines are well maintained.
Checked before and after use.



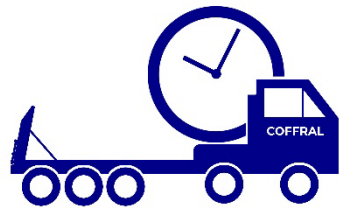
Machine Availability

The right machine for your needs is
ready and waiting for you in our Rental
Park.



Operation

The mandatory assistance from our
Coffral Certified Operators for a smooth
usage of our machines.



Transportation

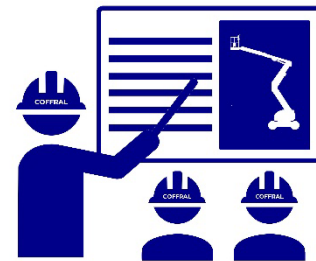
Coffral Lowbed Truck is available to
mobilize Coffral equipment.

On time delivery and fast pick up.



Maintenance

Our Coffral Doctor JLG provides instant
and tailored maintenance for JLG Aerial
Platforms.



Expertise

When you decide to buy a unit, our
Coffral Aerial Platforms Instructors can
train your preferred operator with the
right responsible mindset.



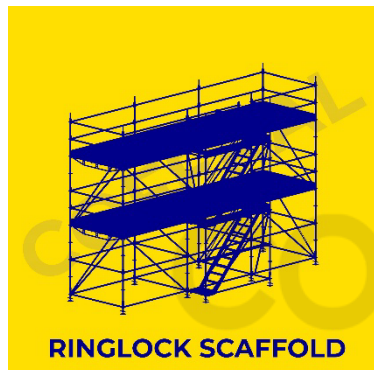
RENTAL & SALES



INDUSTRIAL RINGLOCK SCAFFOLD SYSTEM



Industrial Ringlock Scaffold System



- 100% Layher *Allround*® compatible – Allround is the European name for industrial Ringlock.
- This industrial Ringlock is for industrial projects: compliance with the European Norms EN12810/11. This is an industrial certified scaffold.
- 100% composed of Hot Dipped Galvanized Steel and High Yield Steel.
- Modular and adjustable system with endless design possibilities.
- Can reach up to 150m height with anchorage.
- 80% faster in erection time, compared to traditional tubes & couplers.
- Coffral only uses steel decks with a load class of 4, 5, or 6 (300, 450, or 600kg/sqm).

Ringlock Projects Highlights



2021-2022
GMA Network Center Building Maintenance Project

www.COFFRAL.ph



2018-2020
Republic Cement Plant - Refurbishment & Expansion Project

www.COFFRAL.ph

Ringlock Projects Highlights



2015-2016
Pagbilao Power Plant Project.

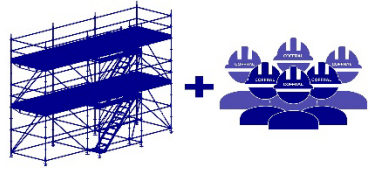
www.COFFRAL.ph



2014
Training of Plant Managers & Safety Officers at Lafarge

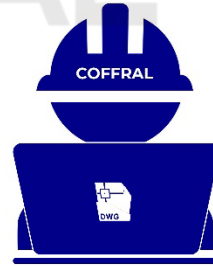
www.COFFRAL.ph

Services for Ringlock



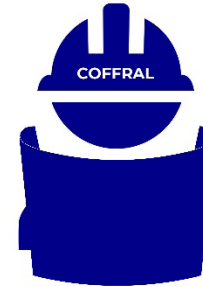
Full Package

Equipment Rental + Engineering + Designs + Installation/Dismantling. No more headaches for you!



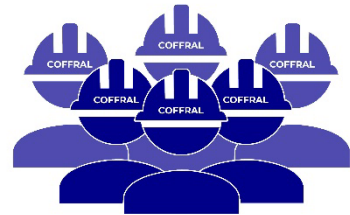
AutoCAD Designs

AutoCAD designs and drafting along with Engineering calculations and material quantification done by our Coffral Engineering Team.



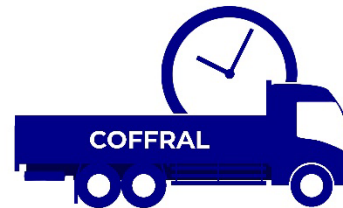
Engineering

Our Coffral Professional Philippine Engineers are available for technical site supervision and drawings certification.



Manpower

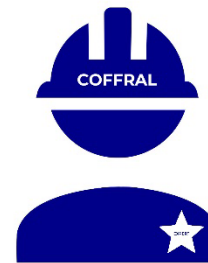
Coffral experienced scaffolders. Ringlock installation, dismantling and instructors.



Transportation

Coffral truck is available to mobilize Coffral equipment.

On time delivery and fast pick up.



Expertise

Get personal advice from the expert. We provide innovative customized solutions. Includes on-site technical assistance and training.



RENTAL & SALES





GONDOLA



Gondola



- Also known as: **Suspended Platforms** or swing stages or window washers.

1. A gondola is composed of 3 main parts:

1. Platform
2. Rooftop beams
3. Electrical Hoist (hoist + central control box [CCB])

- The Hoist is CE approved. One phase hoist (230 volts) can reach up to 100m and 3 phases hoist (380 volts) can reach up to 350m or more.
- European certified: EN1808.
- Maximum length platform up to 15m using end-stirrups, and up to 19m using walk through stirrups. Platform width is fixed on 0.70m.
- Maximum load capacity of platform is 350kg/sqm.
- Possibility to create 90° angles & corners (for example: chimney application).
- Only Coffral installers can install these gondolas at your construction site, non-negotiable!



Gondola Projects Highlights



2020
North Pointe Residences Project.

www.COFFRAL.ph



2019
Masinloc Coal Power Plant Boiler Project.

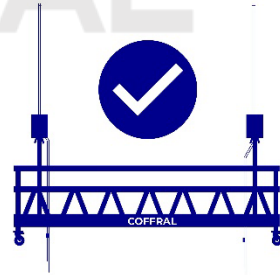
www.COFFRAL.ph

Services for Gondola



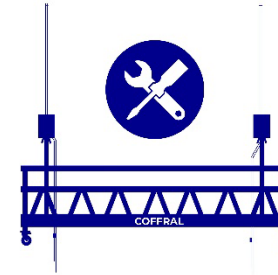
Safety

All gondola equipment are well maintained. Checked before and after use.



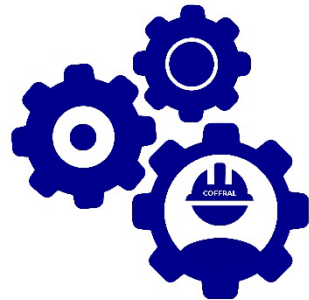
Gondola Availability

The right gondola for your needs is ready and waiting for you in our Rental Park.



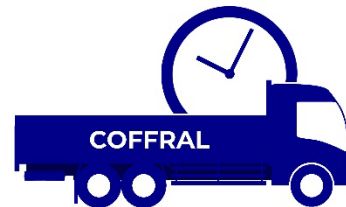
Installation

Coffral provides a MANDATORY installation assistance. Only Coffral installers can install these gondolas.



Operation

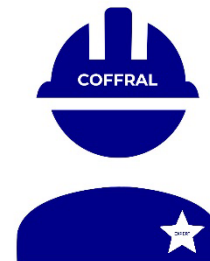
Client has the OPTION to request the service of our Coffral Gondola Certified Operators or on-call technical assistance.



Transportation

Coffral truck is available to mobilize Coffral equipment.

On time delivery and fast pick up.



Expertise

Get personal advice from the expert. We provide innovative customized solutions.



RENTAL ONLY



Shoring Solutions



**Staflex Concrete
Slab Shoring**



**Shoring Jacks
(Props)**



**Atlas Heavy Duty
Shoring**

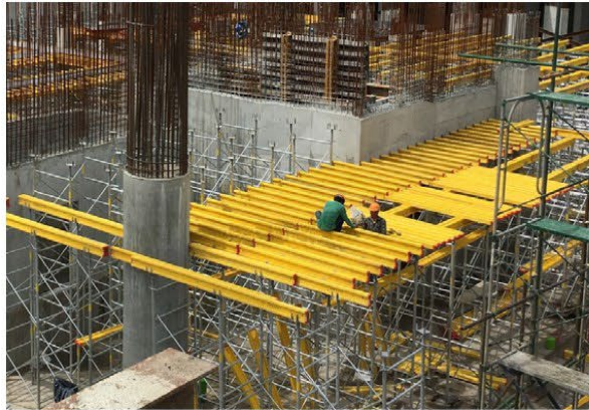


Trench Shoring

STAFLEX CONCRETE SLAB SHORING



Staflex Concrete Slab Shoring



- *StaFlex* = *Stability* + *Flexibility*
- Load capacity of 60kN or 6 Tons per leg.
- Modular System.
- Up to a floor to slab height of 15m.
- Can shore big beam or thick slabs up to 1.50m thick.
- Can be moved horizontally with a trolley or vertically with a tower crane.
- Perfect shoring application for high-rises, malls, airports, power plants and infrastructures.
- This Staflex shoring system has been invented by Jules Goudsmit, founder father of the Coffral-Group.



Staflex Projects Highlights



2016-2017
Mactan International Airport Terminal 2 Linking Bridge Project

www.COFFRAL.ph



2016-2017
Mactan International Airport Terminal 2 Expansion Project

www.COFFRAL.ph

Staflex Projects Highlights



2015-2017
The Sandstone at Portico Project

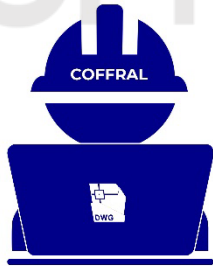
www.COFFRAL.ph



2015-2017
Vertis North Project

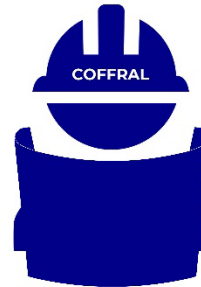
www.COFFRAL.ph

Services for Staflex



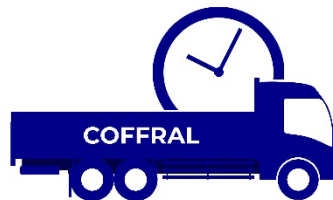
AutoCAD Designs

AutoCAD designs and drafting along with Engineering calculations and material quantification done by our Coffral Engineering Team.



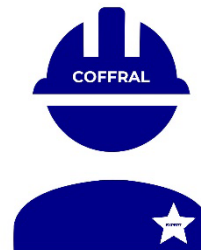
Engineering

Our Coffral Professional Philippine Engineers are available for technical site supervision and drawings certification.



Transportation

Coffral truck is available to mobilize Coffral equipment.
On time delivery and fast pick up.



Expertise

Get personal advice from the expert.
We provide innovative customized solutions.



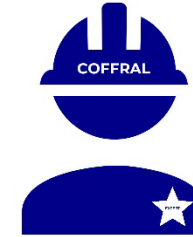
RENTAL & SALES



SHORING JACKS (PROPS)

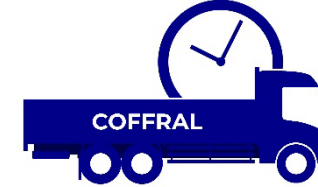


Shoring Jacks (Props)



Expertise

Get personal advice from the expert.
We provide innovative customized solutions.



Transportation

Coffral truck is available to mobilize Coffral equipment.

On time delivery and fast pick up.



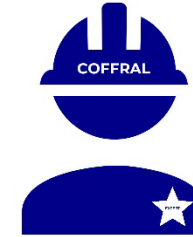
RENTAL & SALES

- Applicable for re-shoring or vertical shoring of flat slabs.
- Shoring Jack 10kN and Shoring Jack 20kN available, in accordance with EN1065.
- All Props are Hot Dipped Galvanized.
- Goes hand in hand with Staflex projects (see previous pages).



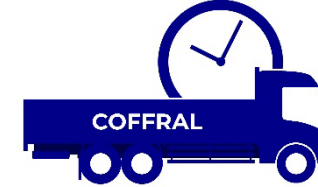
ATLAS HEAVY DUTY SHORING

Atlas Heavy Duty Shoring



Expertise

Get personal advice from the expert.
We provide innovative customized solutions.



Transportation

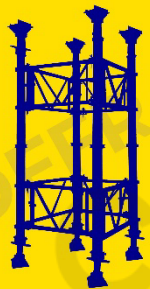
Coffral truck is available to mobilize Coffral equipment.

On time delivery and fast pick up.



RENTAL & SALES

- Perfect for Big Concrete Shoring Job → For shoring of coping beams or pier-head of bridges.
- Can shore slabs up to a maximum thickness of 7.5m and reach a maximum height of 50m.
- 350kN per leg, strongest shoring system in the Philippines.
- Modular System.



ATLAS HEAVY DUTY

Atlas Projects Highlights



2019
FPIP Iconic Bridge Project

www.COFFRAL.ph



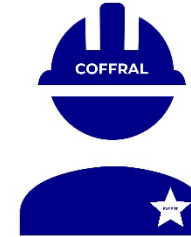
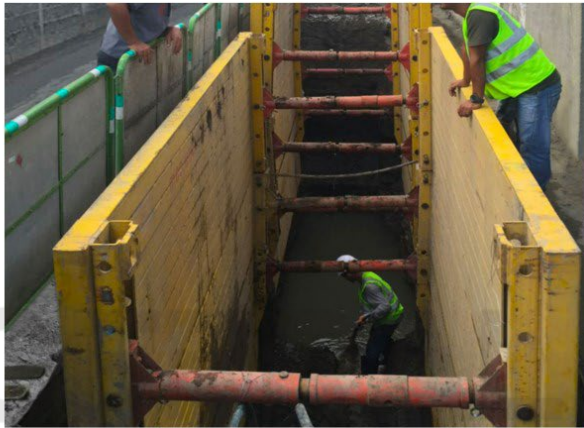
2016
NLEX Expansion Project-Candaba Viaduct

www.COFFRAL.ph

TRENCH SHORING

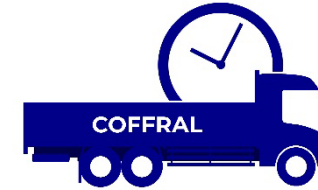


Trench Shoring



Expertise

Get personal advice from the expert.
We provide innovative customized solutions.



Transportation

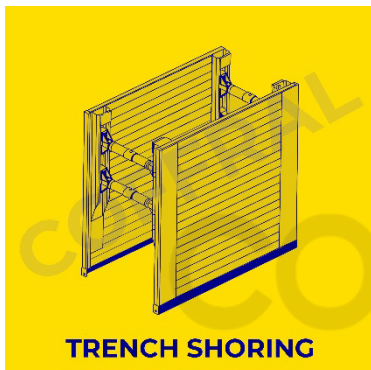
Coffral truck is available to mobilize Coffral equipment.

On time delivery and fast pick up.



RENTAL & SALES

- **Two Models: KS 60 & KS 100.** Also known as: Krings Boxes.
- The most frequently used Trench Box in the world – much affordable and faster than sheet piles.
- Suitable for trenches or excavations of up to 5m deep, and a maximum of 6m wide, in all soil types.
- New Technology – Maximum safety and speed!
- Needs excavator of minimum 25T and two workers for installation.



Trench Boxes Project Highlights



2020
Sewer Pipe Laying Project- Leveriza Street, Malate

www.COFFRAL.ph



2019
Sewer Pipe Laying Project-New Clark City.

www.COFFRAL.ph

Trench Boxes Project Highlights



2016
Maynilad Sewer Pipe Laying Project-Taytay City

www.COFFRAL.ph



2015-2016
Maynilad Sewer Pipe Laying Project-Pasig City

www.COFFRAL.ph

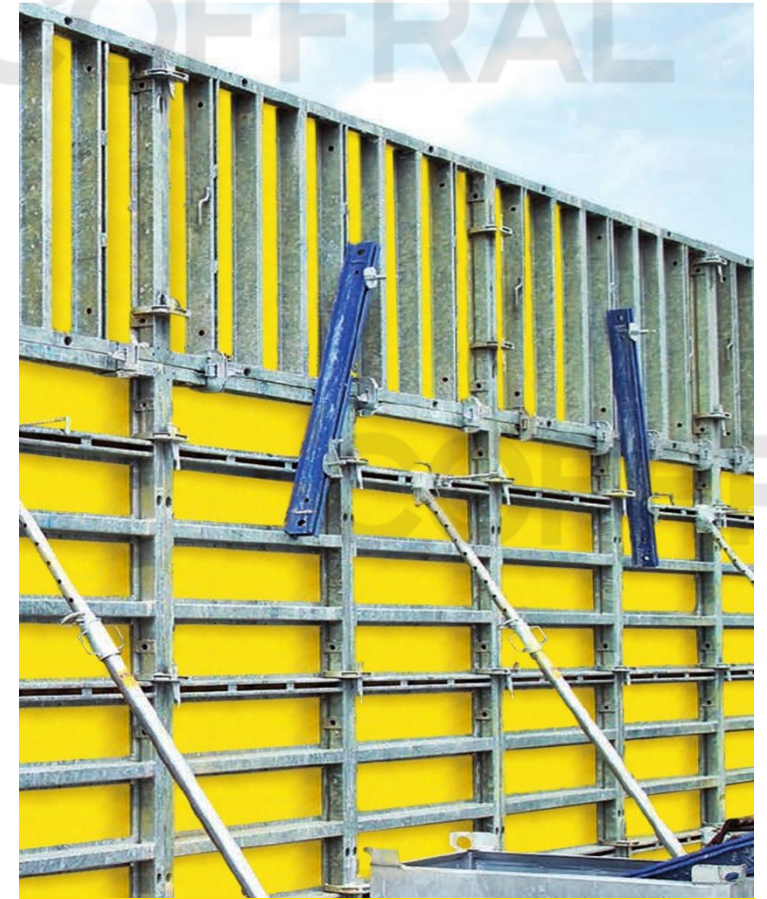
Vertical Formworks Solutions



Column System

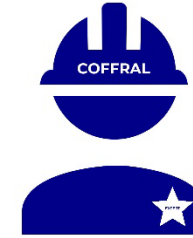


Wall Formwork



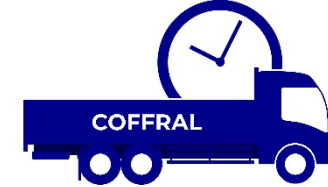
Retaining Formwork

Column Formworks



Expertise

Get personal advice from the expert.
We provide innovative customized solutions.



Transportation

Coffral truck is available to mobilize Coffral equipment.

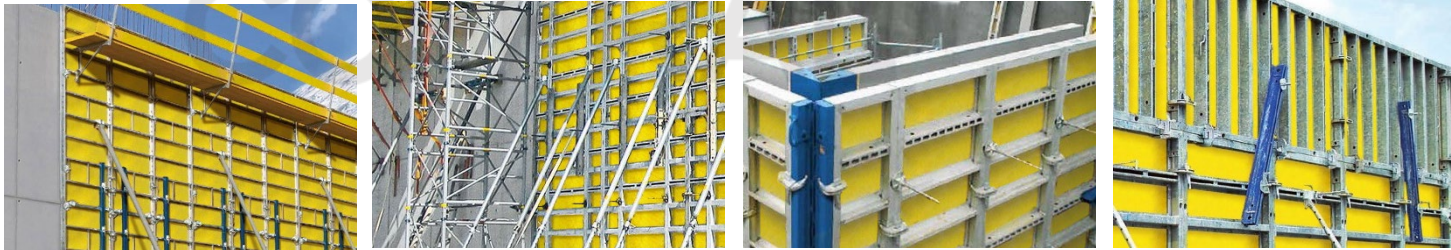
On time delivery and fast pick up.

Column System – Framax universal panels

- Columns up to 8.10m height.
- Our smallest column size is 20cm x 20cm.
- Our biggest column size is 120cm x 120cm.
- Tie rod is applicable when two (2) panels or more is contiguous.
- No need of tie rod for dimensions that are below 1.20m x 1.20m.
- Can do square and rectangle shapes.
- Standard panel height is 2.70m.

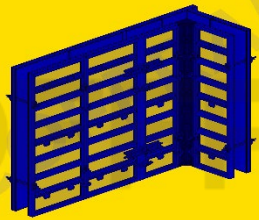


Wall & Retaining Formworks

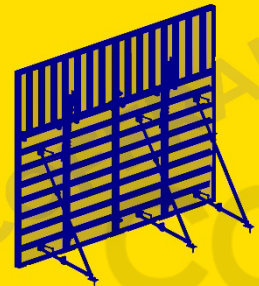


Wall Formwork – Framax panels

- Double sided formworks up to 9m height.
- Our Wall Formworks can do walls up to a 1m thick.
- Our Wall Formworks have a pressure capacity: up to 80KPa/m².
- Staggered pouring of concrete (ideal 1.50m per hours)
- Simple handling and planning. Maximizing safety.
- High number of use cycle – lower follow-up costs.
- Standard panel height is 2.70m.



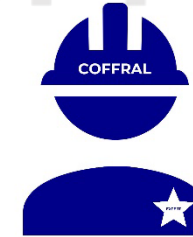
VERTICAL FORMWORK



VERTICAL FORMWORK

Retaining Formwork – Framax panels

- Single sided formworks up to 5.40m height.
- Use of supporting frames to create triangular shapes.
- Ground anchoring very important!



Expertise

Get personal advice from the expert.
We provide innovative customized solutions.



Transportation

Coffral truck is available to mobilize Coffral equipment.
On time delivery and fast pick up.



RENTAL & SALES

03

Our Certificates

Compliance – ISO Systems Alignment

ISO 9001 :2015



ISO 45001 :2018



Registration – SEC & BIR Certificates



REPUBLIC OF THE PHILIPPINES
SECURITIES AND EXCHANGE COMMISSION
Ground Floor, Secretariat Building, PICC
City Of Pasay, Metro Manila

COMPANY REG. NO. CS201000291

**CERTIFICATE OF FILING
OF
AMENDED ARTICLES OF INCORPORATION**

KNOW ALL PERSONS BY THESE PRESENTS:

This is to certify that the amended articles of incorporation of the

COFFRAL FORMWORKS AND SCAFFOLDS, INC.
(Formerly: COFFRAL ACCESS AND SHORING INC.)
(Amending Article I thereof.)

copy annexed, adopted on March 29, 2016 by majority vote of the Board of Directors and by the vote of the stockholders owning or representing at least two-thirds of the outstanding capital stock, and certified under oath by the Corporate Secretary and a majority of the Board of Directors of the corporation was approved by the Commission on this date pursuant to the provision of Section 16 of the Corporation Code of the Philippines, Batas Pambansa Blg. 68, approved on May 1, 1980, and copies thereof are filed with the Commission.

Unless this corporation obtains or already has obtained the appropriate Secondary License from this Commission, this Certificate does not authorize it to undertake business activities requiring a Secondary License from this Commission such as, but not limited to acting as: broker or dealer in securities, government securities eligible dealer (GSED), investment adviser of an investment company, close-end or open-end investment company, investment house, transfer agent, commodity/financial futures exchange/broker/merchant, financing company and time shares/club shares/membership certificates issuers or selling agents thereof. Neither does this Certificate constitute as permit to undertake activities for which other government agencies require a license or permit.

IN WITNESS WHEREOF, I have set my hand and caused the seal of this Commission to be affixed to this Certificate at Pasay City, Metro Manila, Philippines, this 23rd day of December, Twenty Sixteen.



Ferdinand B. Sales
Director
Company Registration and Monitoring Department
Francisco A. Francisco, Jr.
CERTIFIED TRUE COPY

REPUBLIC OF THE PHILIPPINES
KAGAWARAN NG PANANALAPI
KAWANIHAN NG RENTAS INTERNALS
REVENUE REGION NO. 41
REVENUE DISTRICT NO.

BIR Form No. **2303**
Revised July 1997

3RC0001026907
OCN

CERTIFICATE OF REGISTRATION

TIN 007-565-336-000	NAME COFFRAL FORMWORKS AND SCAFFOLDS, INC.	REGISTRATION DATE 02/24/2010
REGISTERED ADDRESS 2701 SUMMIT ONE TOWER 530 SHAW BLVD HIGHWAY HILLS MANDALUYONG CITY 1550		
REGISTERED ACTIVITY(IES) TAX TYPE INCOME TAX VALUE - ADDED TAX WITHHOLDING TAX - EXPANDED/OTH		
TRADE NAME COFFRAL FORMWORKS AND SCAFFOLDING, INC. FORMERLY: COFFRAL ACCESS AND SHORING, INC.		
LINE OF BUSINESS / INDUSTRY 4550 RENTING OF CONSTRUCTION, DEMOLITION EQUIPMENT W/ OPERATOR 5190 OTHER WHOLESALING		

REMINDEES:

INCOME TAX SINGLE INCOME (IR) 17102 1st Qr: MAY 15 - 1st Qr: MAY 31 2nd Qr: AUG 15 - 2nd Qr: AUG 31 3rd Qr: NOV 15 - 3rd Qr: NOV 31 1701 APR 15 - 1702 APR 15	WITHHOLDING TAX - EXPANDED 1701EQ - Last day of the month following the end of quarter 1704E - Annual Information Return - March 01	BOOKS OF ACCOUNTS (BACS) BEFORE DEADLINE FOR FILING OF THE FIRST QUARTERLY INCOME TAX RETURN OR ANNUAL INCOME TAX RETURN WHICHEVER COMES EARLIER.
WITHHOLDING TAX - COMPENSATION 1701-C 10th day of the following month 1804-CF - Annual Information Return - January 31		RENEWAL OF ANNUAL REGISTRATION FEE (ON OR BEFORE JANUARY 31 USING BIR FORM 1905)
VAT 1950M - 20th day of the following month 1950O - Every 25th day after the close of each quarter	PERCENTAGE TAX 2551-Q Every 25th day after the close of each quarter	IMMEDIATELY INFORM THIS DISTRICT OFFICE IN CASE OF TRANSFER/CESSION OF REGISTRATION AND OTHER CONCERNS BY FILING FORM 1905

THEREBY CERTIFY THAT THE ABOVE NAMED PERSON IS REGISTERED AS INDICATED ABOVE, UNDER THE PROVISIONS OF THE NATIONAL INTERNAL REVENUE CODE, AS AMENDED.

ATTY. DEOGACIAS F. VILLAR JR.
REVENUE DISTRICT OFFICER (Registration)

IDONAH L. ROY
Asst. Revenue District Officer

THIS CERTIFICATE MUST BE EXHIBITED CONSPICUOUSLY IN THE PLACE OF BUSINESS.

COMPLETED REQUIREMENTS
Dated: **MAR 17, 2021**

04

Our Contact Information

Company Outline

Company Name	Coffral Formworks & Scaffolds, Inc.
Established	January 15, 2010
CEO	Jim Goudsmit
Head Office	Unit 2701, Summit One Tower, 530 Shaw Blvd., Mandaluyong City, 1550, Philippines
Rental Park Luzon	Lot 97 Sitio Yanka, Brgy. Santiago, Conception, Tarlac, Philippines
General Information	+63 917 188 1888

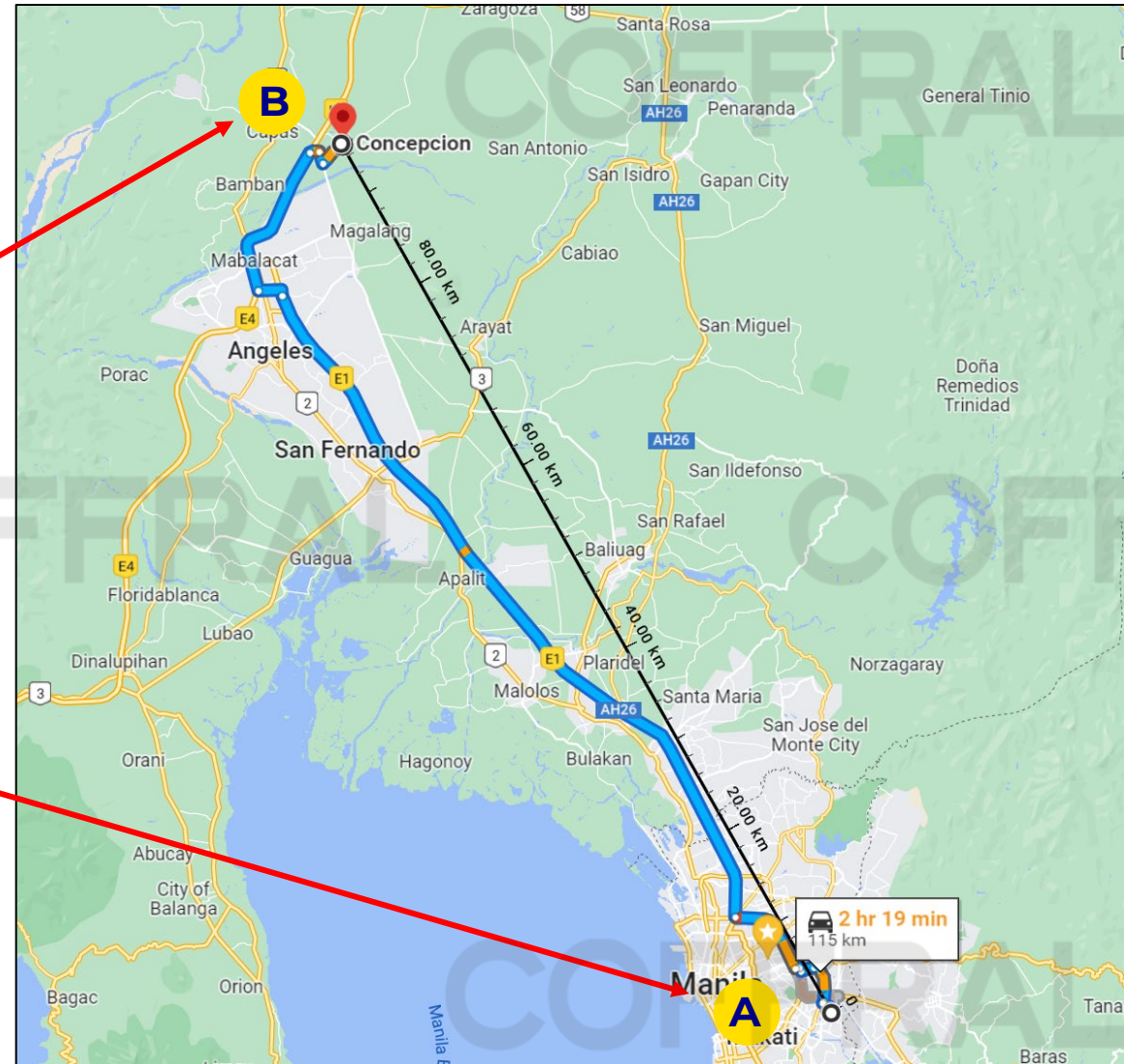


Manila Head Office

Location Maps

COFFRAL RENTAL PARK
 Coffral Formworks & Scaffolds Inc.
Training Center
 Lot 97 Sitio Yanka, Brgy. Santiago,
 Concepcion, Tarlac, Philippines

COFFRAL FORMWORKS & SCAFFOLDS Inc.



Thank you!

**COFFRAL
ASIA**

COFFRAL PHILIPPINES



www.coffral.ph
inquiry@coffral.ph

Unit 2701 Summit One Tower, 530 Shaw Blvd., Mandaluyong City, 1550, Philippines

COFFRAL THAILAND



www.coffral.co.th
inquiry@coffral.co.th

72 soi Ratchada Niwet Yaek 3, Samsen Nok, Huai Khwang, Bangkok 10310, Thailand



FOLLOW US

www.COFFRAL.asia
[coffralasia](https://www.linkedin.com/company/coffralasia)
[CoffralAsia](https://www.facebook.com/CoffralAsia)